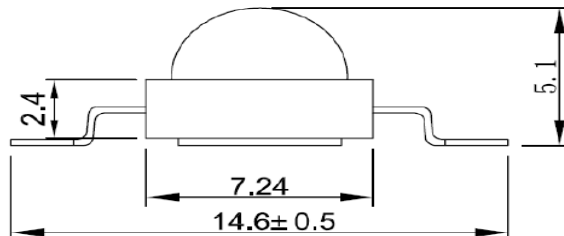
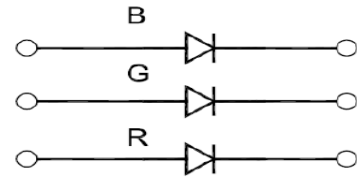
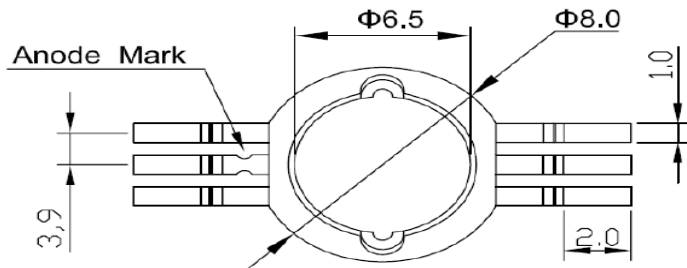


1W high power 6PINs RGB LED

1W (or 3W) high power type RGB (or other tricolor) LEDs, 140 degree view angle. It has 6 PINs. The position of the three chips can be customized. High lumen flux and long lifespan.

Features:

- Well-known chip material, Epileds
- 99.99% gold wire bonding
- Full color spot, well color consistency
- R, G, B, three color in one Package
- High flux per LED
- Low-temp & lead free reflow soldering
- More energy efficient than incandescent and most halogen lamps
- Low Voltage DC operated
- Instant light(less than 100ns)
- No UV





Notes:

1. The Anode side of the emitter is denoted by "+" Sign in the lead frame.
2. Electrical insulation between the case and the board is required. Do not electrically connect either the anode or cathode to the slug.
3. Drawing not to scale.
4. All dimensions are in millimeters.
5. Unless otherwise indicated, tolerances are $\pm 0.2\text{mm}$.
6. Please do not bend the leads of the LED, otherwise it will damage the LED.
7. Please do not use a force impact or pressure on the lens of the LED, otherwise it will cause a catastrophic failure.

OEM / ODM

HIGH QUALITY LED LIGHT

WE FOCUS ON THE BEST LED LIGHTS



More energy saving



High brightness



Durable



High-quality materials

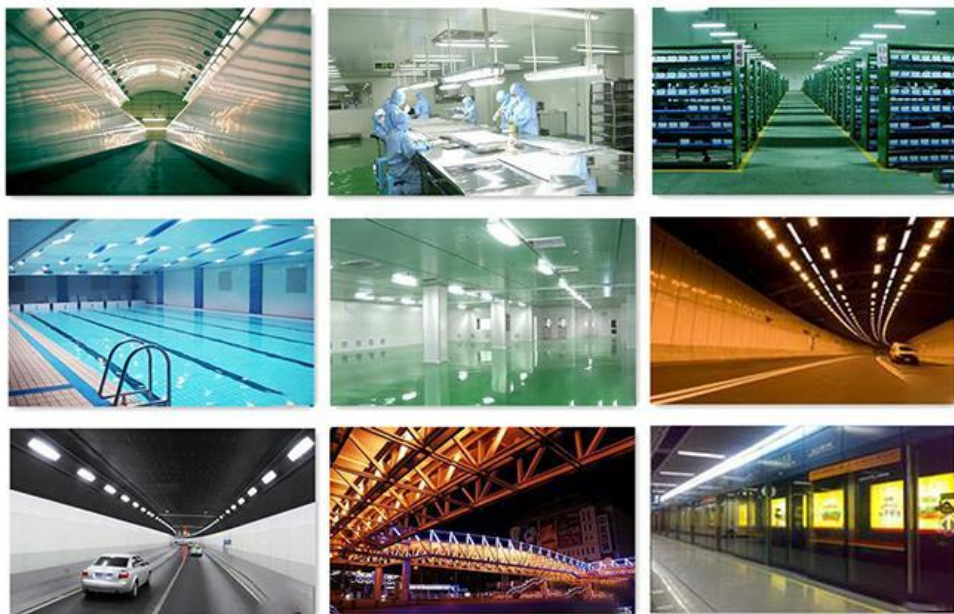
PRODUCT PRESENTATION

Part No	Power (W)	Emitting Color	Color Wavelength(nm)	Luminous Flux (lm)	Forward Voltage(V)	Forward Current(mA)
AL-H1W RGBC	3*1W	Red	620-630	40-60	2.2-2.6	350mA
		Green	520-530	60-80	3.0-3.4	350mA
		Blue	565-575	20-40	3.0-3.4	350mA

APPLICATIONS

APPLICATION SCENARIOS:

Corridor, factory floor, warehouse, swimming pool, parking lot, tunnel, pedestrian bridge, subway station



RELATED PRODUCTS



5mm 0.5W LED



10mm 0.5W LED



SMD 2835 LED



SMD 3014 LED



SMD 3528 LED



SMD 3535 LED



SMD 5050 LED



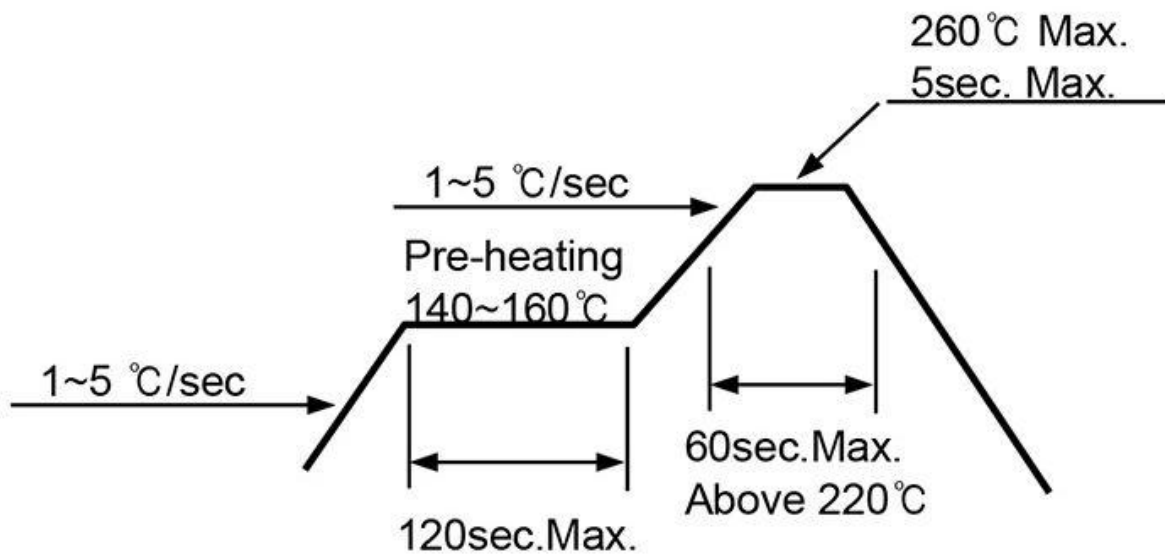
SMD 5730 LED

Soldering Conditions

- When soldering High Power Led, Heat may affect the electrical and optical characteristics of the LEDs.
- In soldering, do not stress the lead frame and the resin part under the high temperature.
- The silicone part should be protected from mechanical stress or vibration until the High Power

Led return to room temperature after soldering.

- Preliminary heating to be at 140~160°C max, for 120 seconds max.
- Soldering heat to be at 260°C max, for 3 seconds max.
- For manual soldering is not more than 3 seconds at max 260°C, under soldering iron.



Storage

- Before opening the package, the LEDs should be kept at 30°C or less and 70%RH or less.
- The LEDs should be used within one year.
- After opening the package, the LEDs should be kept at 30°C or less and 30%RH or less.
- The LEDs should be used within one month after opening the package.
- If the moisture absorbent material(silicone) has fade away or the LED have exceeded the storage time, baking treatment should be performed using the following conditions. Baking treatment: 60°C±5°C for 48 hours.

Static Electricity

- Static electricity or surge voltage damages the High Power LED. It is recommended that a wrist band or an anti-electrostatic glove be used when handing the LEDs.
- A tip soldering iron is requested to be grounded, An ionizer should also be installed where risk of static.

- All devices, equipment and machinery must be properly grounded, It is recommended that measures be taken against surge voltage to the equipment that mounts the High Power LED.

Cleaning

- Isopropyl Alcohol or Ethylene Alcohol is recommended in 5 minutes at room temperature. Do not use unspecified chemical may cause crack or haze on the surface of the epoxy resin.
- Before cleaning, a pre-test should be done to confirm whether any damage to the LED will occur.
- Freon solvent should not be used to clean the LEDs because of worldwide regulations.

Heat generation

- When the LEDs are illuminating, operating current should be decided after considering the ambient maximum temperature.
- Please consider the heat generation of the LED when it is designed the PCB.
- The LEDs must be mounted on metal core PCB or heat sink or applied thermal pad.

Handling LED

ZHIDING Electronics recommends the following at all times when handling LEDs or assemblies containing the these LEDs:

- When handling the LED with tools like Tweezer or Nipper, do not apply Mechanical Forces directly on LED's Surface.
- Do not touch with hand LED Lens surface directly. It may contaminate the Lens surface and affect on optical characteristics.
- LED should be handled from side because LED's molding material may be damaged with scratching on surface, piercing molding material and broking wire.



 Incorrect Handling



 Correct Handling

SHIPPING

SHIPPING
SHIPPING

1. FedEx/DHL/UPS/TNT for samples, Door-to-Door
2. By Air or by Sea for batch goods, for FCL; Airport/ Port receiving
3. Customers specifying freight forwarders or negotiable shipping methods
4. Delivery Time: 3-7 days for samples; 5-25 days for batch goods



WHY CHOOSE US



Customized design is available, OEM and ODM are welcomed.



We have best production capability, best quality control, best service.



Reply your inquiry in 24 working hours.



Customized design is available, OEM and ODM are welcomed

CERTIFICATION



FAQ

Q1. How long of your delivery time?

A1. 5-7 days for samples, 1-2 weeks for formal order.

Q2. Can you provide customization and OEM service?

A2. Yes, we offer customization and OEM service, please tell us your requirements clearly.

Q3. What chip you usually use for your led?

A3. Normally we use Taiwan chip. We will choose suitable chip for different leds.

Q4. What is your main products?

A4. Dongguan Zhiding Electronics Technology Co., LTD is a high-tech enterprise specialized in manufacturing, designing and selling high quality LED lighting and LED related products. We have SMD LEDs, Dip leds, High Power LEDs, Piranha LEDs, IR LEDs and UV LEDs and so on. Welcome to receive your inquiry.

Q5. Will you deliver the right goods as ordered? How can I trust you?

We, the warming customer or his agent or his 3nd party come to our factory for detail checking. We protect the customer's design, sales area competition, ideas of design And all of your provate information.

Most of the regular items, we are stocked, so we have an advantage in the delivery period. In the absence of inventory, we will arrange production as soon as possible according to customer needs. Providing quality service to customers is the basic premise of our sales. Welcome to inquire about our products!

WELCOME TO CONTACT US>>>>WWW.ZHIDINGLED.COM



Oversea Sales Manager
Elsa Xiao
E-mail:sales@zhidingled.com
Skype: elsa.xiao0418
Mobile: 86-13412570091
WhatsApp: 86-13412570091
Tel: 86-769-22665151
Fax:86-769-22665155